



WELCOME TO HOME TOWN

INCLUSIVITY – EQUALITY – OPPORTUNITY – GROWTH.

THESE KEY WORDS FORM BASIC NEEDS AND RIGHTS OF EVERY CITIZEN IN ANY COUNTRY. ANY SOCIAL HOUSING PROJECT SHOULD CONSIDER THESE PARAMETERS WHEN APPROACHING A VISION. SOCIAL HOUSING GOES BEYOND ONLY PROVIDING HOMES TO PEOPLE, IT SHOULD AIM TO ESTABLISH AN ECO SYSTEM WHERE INHABITANTS SEE THEMSELVES GROW TO A MORE EQUAL WORLD. SOCIAL HOUSING AS A CONCEPT HAS TO BE INTERWOVEN WITH A WHOLESOME LIVING EXPERIENCE FOR THE COMMUNITY.

ANY COMMUNITY TO SUSTAIN AND THRIVE IT NEEDS DEDICATED SPACES FOR VARIOUS FUNCTIONS IT SHOULD AIM TO CATER TO WHILE SERVING AS A HOME THAT BUILDS AND PROSPERS INDIVIDUALS IN A SOCIAL, HEALTHY AND ENVIRONMENTALLY SUSTAINABLE FABRIC.

- | | | |
|--------------------------------|---|---|
| SELF-SUSTAINING SOCIAL HOUSING | DWELLING
FOOD
UPSKILL
OPPORTUNITIES
FACILITIES
ENTERTAINMENT
SOCIAL
COMMUNITY
FAITH | HOUSING
FARM PRODUCE
INSTITUTIONS
OFFICES
GROCERY/RETAIL
MALL/MULTIPLEX
ART & CULTURE
COMMUNITY HALLS
PRAYER HALL |
|--------------------------------|---|---|

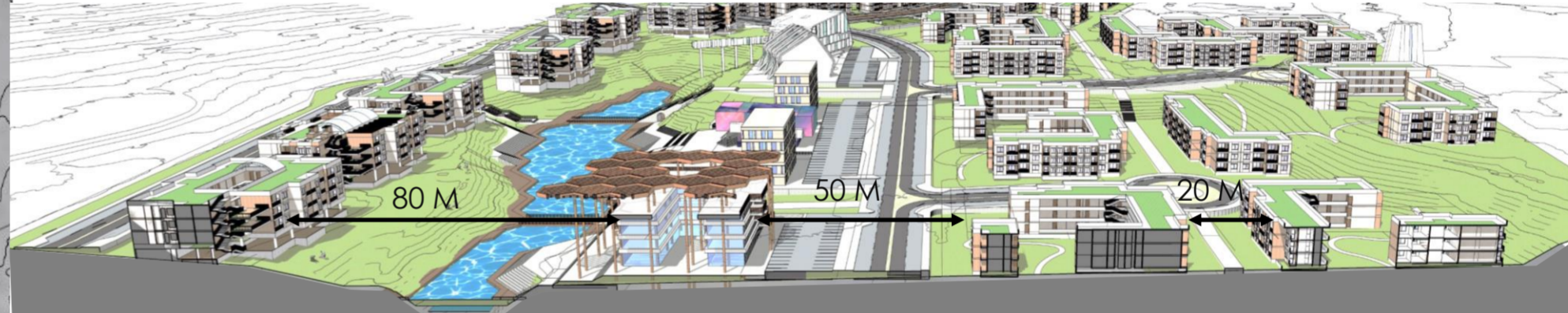
HOME TOWN

'HOME TOWN' IS A PLACE WHERE YOU ARRIVE AT WHEN YOU WANT THE CITY'S SOCIAL FABRIC TO PROVIDE AN ECOSYSTEM THAT SUSTAINS AND NURTURES GROWTH FOR SOCIAL HOUSING AS A STARTUP AND ORGANICALLY GROWS TO SUPPORT THE CITY BACK.

ZONING PLAN

SITE AREA IN CONSIDERATION 24.2 HECTARES (59.8 ACRES)

PLANNING AIMED AT RETAINING MAXIMUM EXISTING INFRASTRUCTURE, TREES, TERRAIN, ANTICIPATING GROWTH OF FORTH RIVER USING PERMACULTURE AND RAIN HARVESTING. IDENTIFYING MOTORABLE ROADS CONNECTING SPRINGFIELD ROAD TO WEST CIRCULAR ROAD AND BALLYGOMARTIN ROAD ALONG WITH THE FORTH RIVER STREAM. KEEPING THE VEHICULAR CIRCULATION ROAD OPTIMAL CONSIDERING THE DEVELOPMENT AND KEEPING IT MORE PEDESTRIAN FRIENDLY. ROADS DESIGNED TO ACCOMMODATE STREET PARKING, APPROXIMATELY 350 CARS ON STREET FOR RESIDENTS. BIKE PARKING IN INDIVIDUAL BLOCKS.



PUBLIC ENTITIES PLACED CLOSER TO SPRINGFIELD ROAD. SEMI-PUBLIC ENTITIES FOR LOCALS BUSINESSES, INSTITUTES AND ACTIVITY ZONES. BUEFFERED FROM RESIDENCES ON EITHER SIDES BY EITHER ACROSS MAIN ARTERIAL ROADS OR ACROSS FROTH RIVER.

GREEN CORRIDORS ARE RANGING FROM 20 TO 25 M IN PROPORTION OF THE 11 M HEIGHT OF MOST BUILDINGS CONSIDERING THE SOLAR ANGLE OF THE MUCH NEEDED WINTER SUN IS VERY LOW. THE OVERALL TERRAIN RISING FROM SOUTH UP TOWARDS NORTH HELPS IN THE PURPOSE AS WELL.

HOME

- STUDIOS
- 1 BED
- 2 BED

THRIVE

- 6 ACRES
- ECO-CHAMBER FOR RESIDENT GROWTH

- INSTITUTES
- UPSKILL
- LOCAL BUSINESSES-
- OFFICES
- RETAILS
- WORKSHOPS
- CLINICS

PERMACULTURE FARMING

- 3.5 ACRES

STARTUP

- 7 ACRES
- REVENUE GENERATORS

- OFFICE COMPLEX
- MALL
- MOVIES
- DRIVE THROUGH CAFÉ,S
- FAST FOOD, RETAIL
- TOWN HOUSES

HOME TOWN

HOME TOWN



HT OFFICE
16500 SQ MT



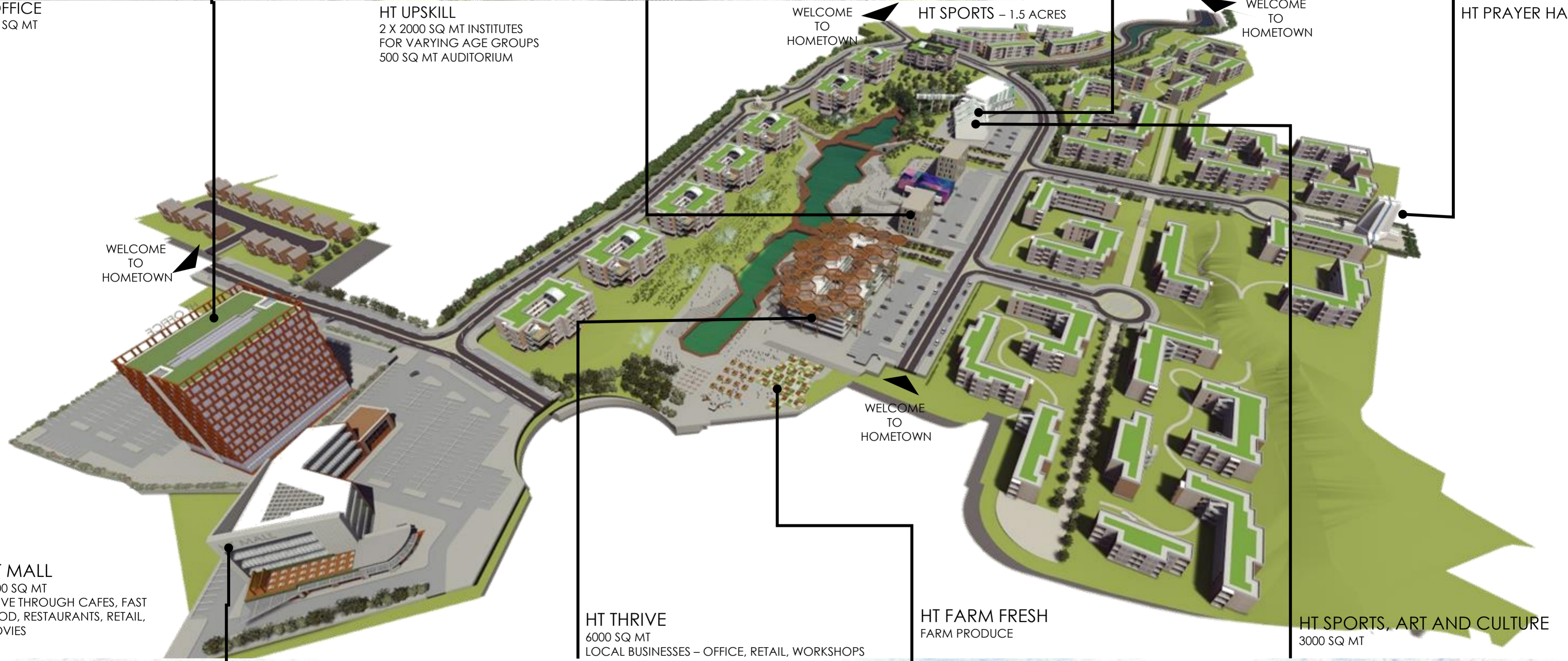
HT UPSKILL
2 X 2000 SQ MT INSTITUTES
FOR VARYING AGE GROUPS
500 SQ MT AUDITORIUM



HT SPORTS - 1.5 ACRES



HT PRAYER HALL



WELCOME TO HOMETOWN

WELCOME TO HOMETOWN

WELCOME TO HOMETOWN

WELCOME TO HOMETOWN

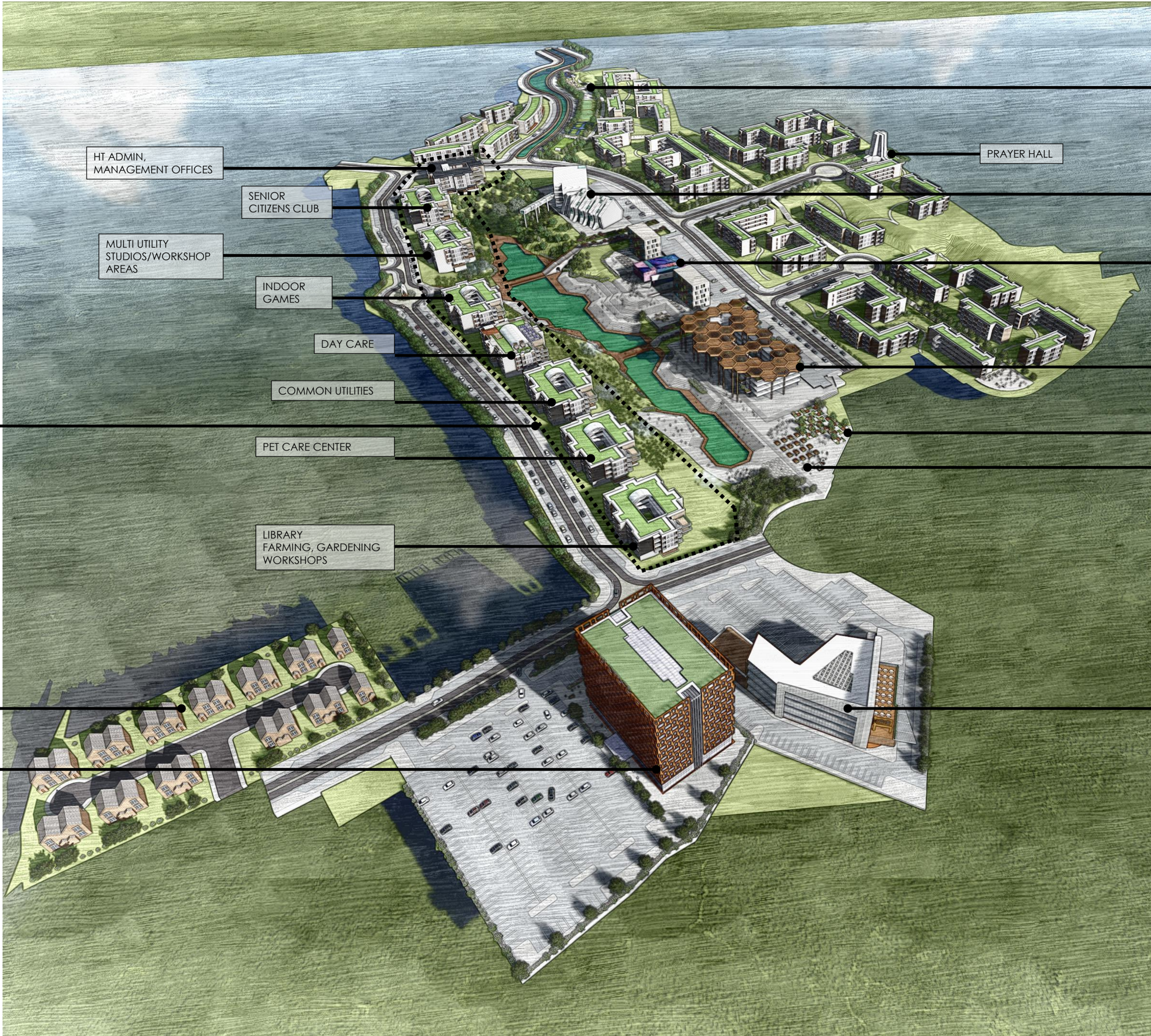
HT THRIVE
6000 SQ MT
LOCAL BUSINESSES - OFFICE, RETAIL, WORKSHOPS

HT FARM FRESH
FARM PRODUCE

HT SPORTS, ART AND CULTURE
3000 SQ MT

HT MALL
6000 SQ MT
DRIVE THROUGH CAFES, FAST
FOOD, RESTAURANTS, RETAIL,
MOVIES





HT ADMIN,
MANAGEMENT OFFICES

SENIOR
CITIZENS CLUB

MULTI UTILITY
STUDIOS/WORKSHOP
AREAS

INDOOR
GAMES

DAY CARE

COMMON UTILITIES

PET CARE CENTER

LIBRARY
FARMING, GARDENING
WORKSHOPS

PRAYER HALL

HT SPORTS
OUTDOOR SPORTS

HT SPORTS ART
AND CULTURE
INSTITUTES, WORKSHOPS,
GALLERIES FOR INDOOR
SPORTS, ART AND CULTURE

HT UPSKILL
INSTITUTES FOR ALL AGE
GROUPS
HT AUDITORIUM
HT TOWN SQUARE

HT THRIVE
LOCAL BUSINESSES –
OFFICE, RETAIL,
WORKSHOPS

HT NATURE FRESH
(GARDENING)

HT FARM FRESH
(VEGETABLES AND FRUITS)

HT MALL
DRIVE THROUGH CAFES
FAST FOOD
MOVIES
RETAIL
SALON
SPA
FOOD COURTS
FAMILY ENTERTAINMENT
CENTRES

COURTYARDS
LOWER GROUND
LEVEL IN ALL THE 8
BLOCKS HAVE
AMENITIES FOR THE
COMMUNITY – 500
SQ MT EACH

HT TOWN
HOUSES
3 BED HOUSES

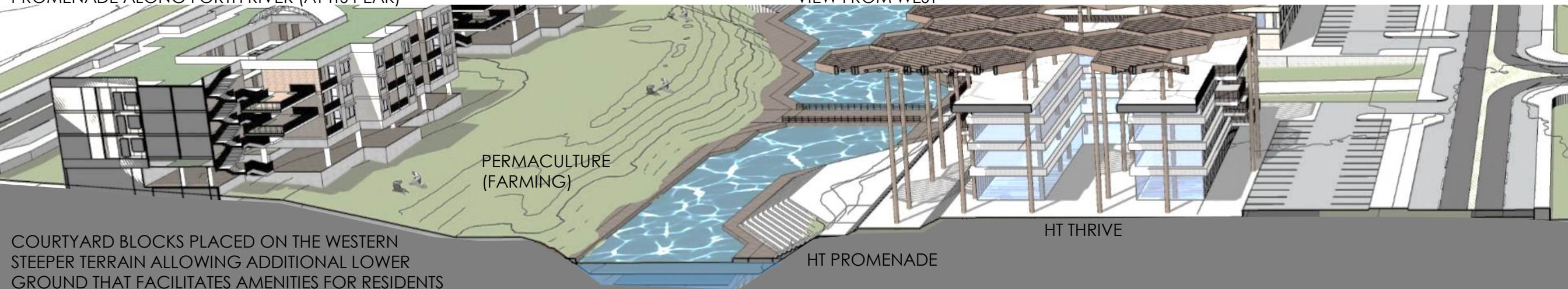
HT OFFICE
FLEXIBLE SMALL,
MEDIUM TO LARGE
SIZED OFFICES
WEWORK RENTALS



PROMENADE ALONG FORTH RIVER (AT ITS PEAK)



VIEW FROM WEST



COURTYARD BLOCKS PLACED ON THE WESTERN STEEPER TERRAIN ALLOWING ADDITIONAL LOWER GROUND THAT FACILITATES AMENITIES FOR RESIDENTS

PERMACULTURE (FARMING)

HT THRIVE

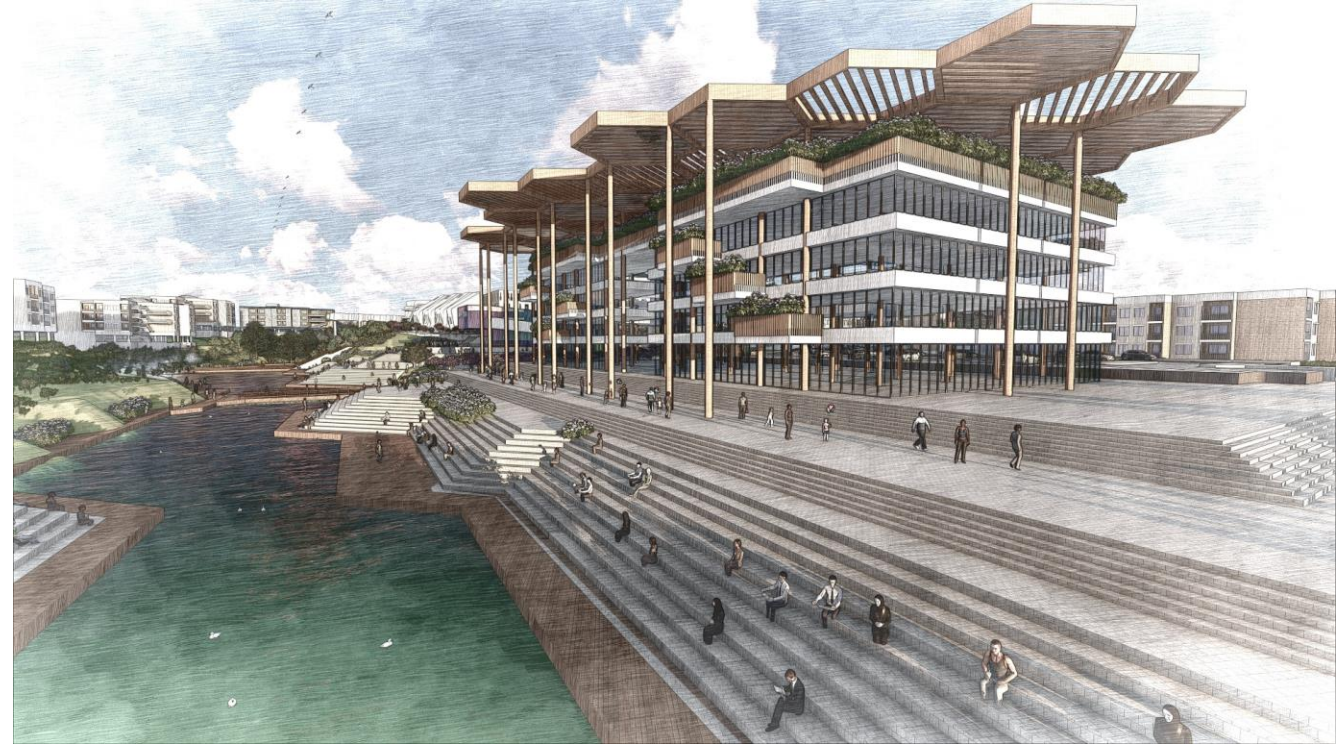
HT PROMENADE



PROMENADE ALONG FORTH RIVER (AT ITS PEAK)



VIEW FROM NORTH



HOME TOWN

Earth Shilpkar Studio

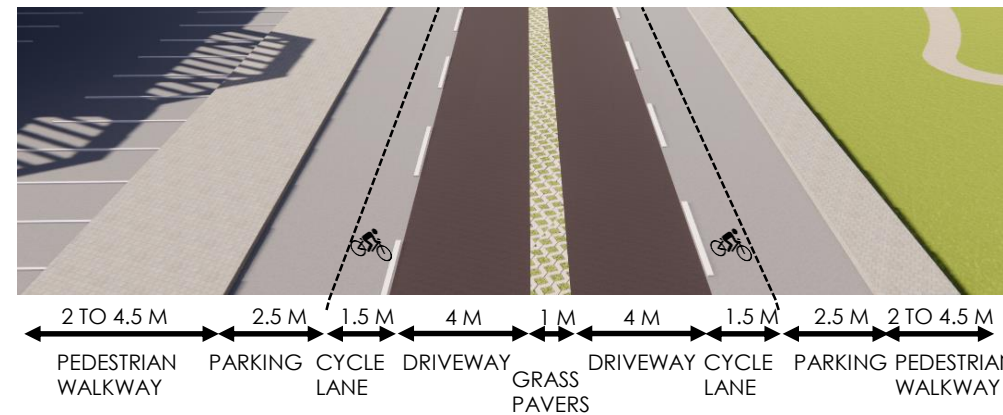


HT NATURE FRESH BESIDE HT THRIVE



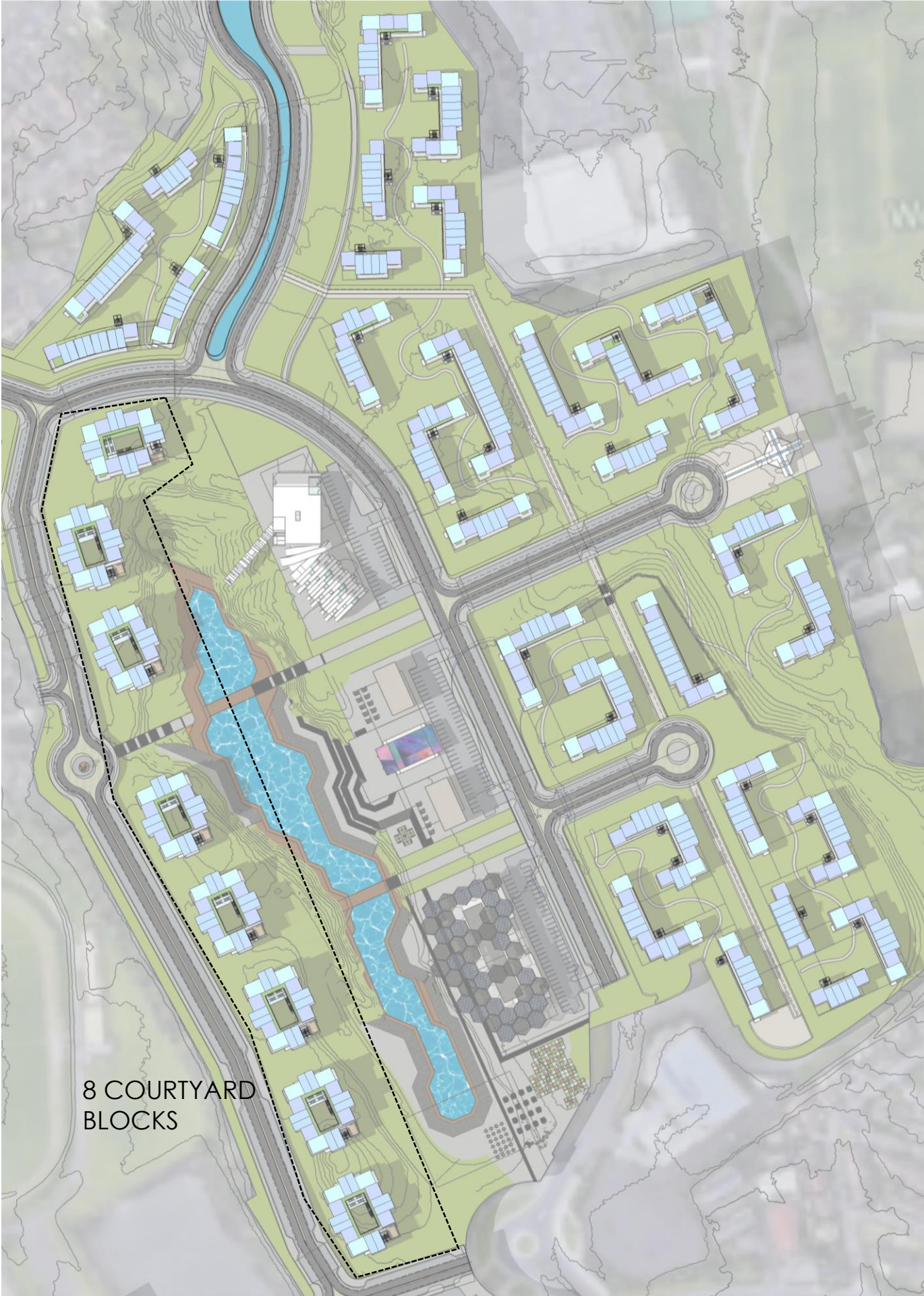
COURTYARDS

HT SPORTS, ART AND CULTURE



HOME TOWN





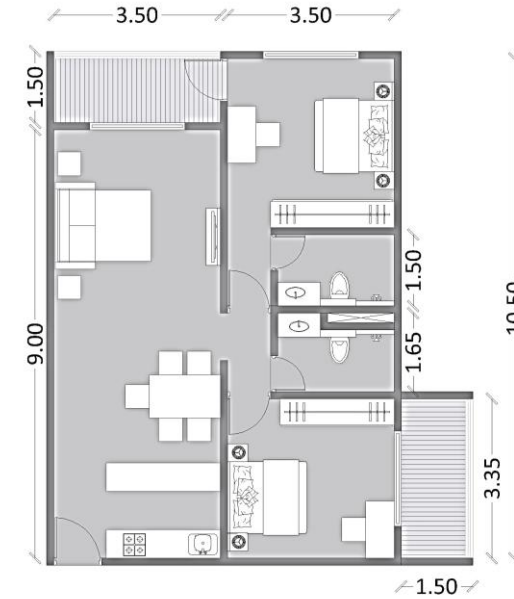
TYPICAL DWELLING UNITS



**STUDIO
40 SQ MT**



**1 BED
50 SQ MT**



**2 BED
70 SQ MT**

EVERY UNIT IS PROVIDED WITH A PRIVATE PATIO (BALCONY), STUDY, PULL OUT COUCHES IN LIVING AREAS. LAUNDRY FACILITY AND COMMON UTILITIES WILL BE IN INDIVIDUAL BUILDING BLOCKS

ALL BUILDINGS ARE 3 STOREYED AND WITHOUT ELEVATORS

TWO TYPES OF BUILDINGS – COURTYARDS AND LINEAR

8 COURTYARD BLOCKS HAVE BEEN PLACED ON WESTERN SIDE WHERE SLOPE IS STEEP.

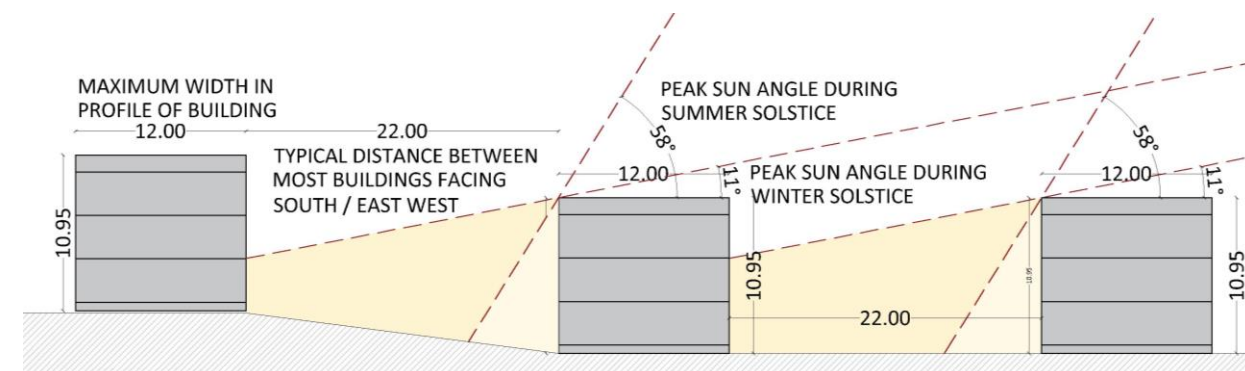
ARRANGEMENT OF BUILDING ALLOWS A CONTINUOUS GREEN AND PROVIDES ACCESS TO LARGER OPEN SPACES FROM ANYWHERE IN LAYOUT

PER FLOOR (IN ALL BUILDINGS)

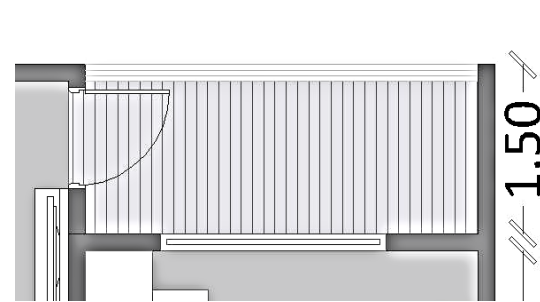
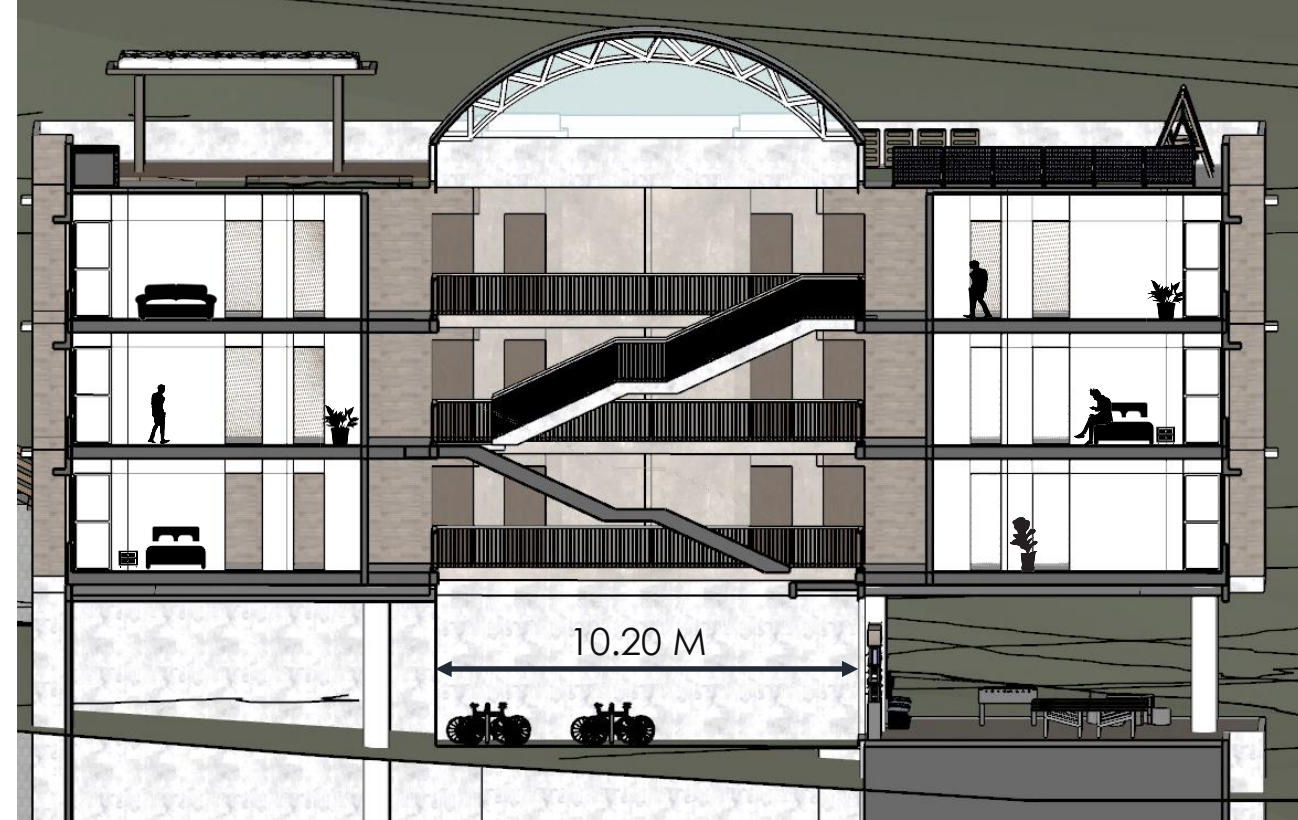
242	STUDIOS	
144	1 BED APARTMENTS	
78	2 BED APARTMENTS	

TOTAL

726	STUDIOS
432	1 BED APARTMENTS
234	2 BED APARTMENTS
1392	TOTAL UNITS



SCHEMATIC SECTION THROUGH BUILDING BLOCKS FACING SOUTH



50% FRONTAGE OF EACH APARTMENT HAS PATIO ACTS AS BUFFER SPACE DURING LONG SUMMER DAYS INSULATED WALLS WITH 1.5 M WIDE WINDOWS PROVIDED WITH OVERHANGS TO COUNTER EXCESS SUN DURING SUMMERS.



EACH COURTYARD UNIT GETS AN EXTRA LOWER GROUND DEPENDING ON THE SLOPE IT ENCOUNTERS, THIS SPACE IS USED FOR COMMON FACILITIES LIKE

- DAY CARE
- BICYCLE PARKING
- INDOOR SPORTS
- COMMUNITY LAUNDRY
- LOUNGE AREA
- SENIOR CITIZENS CLUB
- LIBRARY
- MULTI-UTILITY SPACES
- FARMING, GARDENING
- WORKSHOPS
- PET CARE



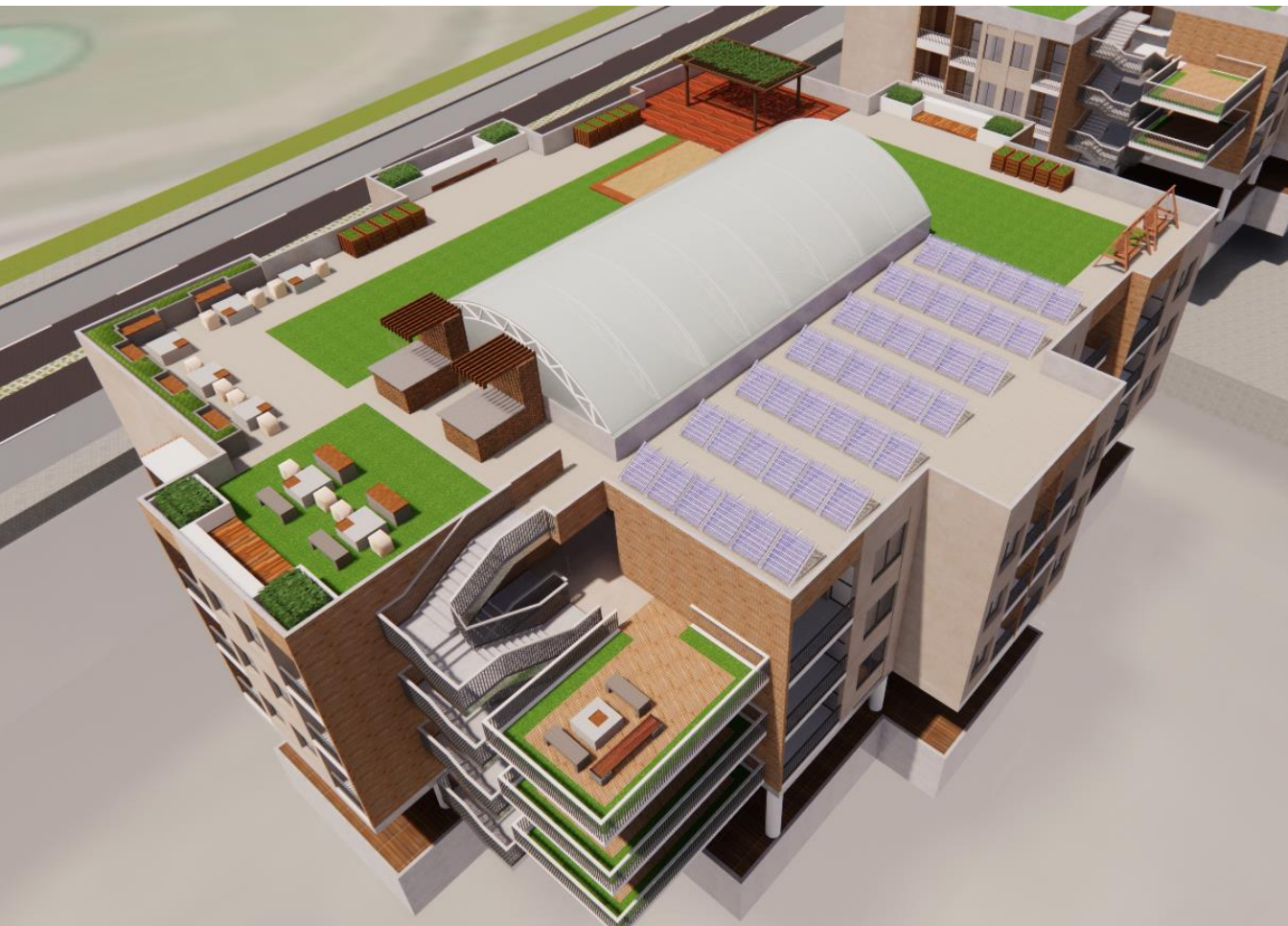
COMMUNITY TERRACES EACH FLOOR





2 BEDS HAVE BEEN LOCATED AT THE PERIPHERY IN ALL BUILDING BLOCKS ALLOWING BOTH ROOMS TO HAVE BALCONIES

TERRACE PARTLY COVERED WITH PV CELLS AND LANDSCAPED FOR COMMUNAL USE IN ALL BLOCKS



OPEN AREA BARBECUE AND GATHERING AREAS

HOME TOWN IS WHERE A COMMUNITY LEVEL TOWN IS ENVISIONED TO ENSURE AN ALL ROUND DEVELOPMENT OF INDIVIDUALS AS WELL AS COMMUNITY AS A WHOLE WITH EQUALITY.
A WALK TO WORK – WALK TO SCHOOL – WALK TO ENTERTAIN / AMENITIES CONCEPT
DEDICATED CYCLE LANE IN ALL ROADS, FEWER CARS AND AMPLE PARKING FOR BICYCLES IN EACH BLOCK



HT THRIVE – PROMOTING LOCAL SKILLS AND BUNIESSES



HT TOWNSQUARE – COMMUNAL INCLUSION



PERMACULTURE ALONGSIDE RESIDENCES
COURTARDS



LARGE INTRERMEADTE OPEN SPACES ALONG
GREEN CORRIDORS



GREEN CORRIDORS

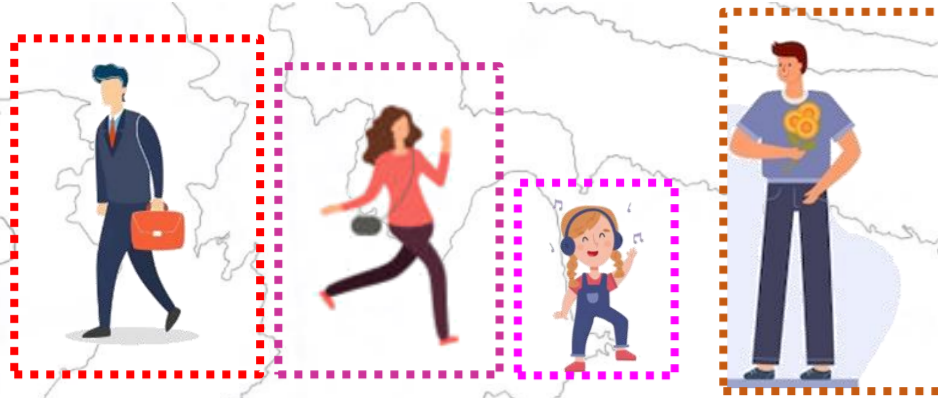


FORTH RIVER FACING RESIDENCES

HT OFFICE AND HT MALL SERVING AS
OPPORTUNITIES FOR HT RESIDENTS AND RENTAL
INCOME FOR SUSTAINANCE



A DAY IN HOME TOWN NEIGHBOURHOOD



MEET DAVID JULIA AND LITTLE ELSA

MEET MIGUEL AND OTHERS

FOLLOW THEIR JOURNEY ON MAP OF HOMETOWN



DAVID, JULIA AND ELSA AT PRAYER HALL



DAVID, JULIA AND ELSA VISITING HT TOWN SQUARE



YOGA CLASSES



JULIA AT HT FARM FRESH



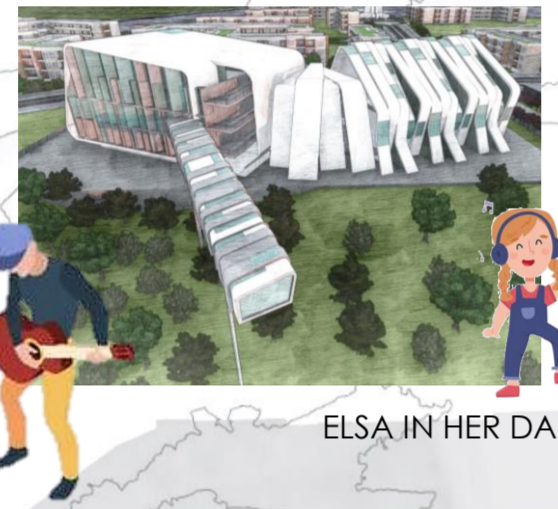
JULIA IN HT THRIVE



ELSA IN HT SCHOOL



JULIA IN HT UPSKILL



ELSA IN HER DANCE CLASS

MIGUEL FOLLOWING HIS PASSION FOR MUSIC



OUTDOOR GYM

MIGUEL WITH FRIENDS PLAYING BASKETBALL



MIGUEL WITH FRIENDS PLAYING BASKETBALL



KIDS ENJOYING FOOTBALL

SENIOR CITIZEN WELFARE AND CULTURAL ASSOCIATION



FAMILY ENJOYING DAY OUTSIDE



JULIA CYCLING



SENIOR CITIZEN CLUB



CLINIC AT HT THRIVE



COACHING CENTERS



MIGUEL AT HT FARM FRESH



MOVIE TIME



FRIENDS AT COFFEE SHOP



PET CARE CENTER FOR PET LOVERS



MIGUEL WORKING AT MALL



DAVID HELPING AT FARM



ELSA IN DAY CARE



DAVID AT WORK



DAVID SHOPPING

WELCOME TO HOME TOWN

INCLUSIVITY – EQUALITY – OPPORTUNITY – GROWTH.

THESE KEY WORDS FORM BASIC NEEDS AND RIGHTS OF EVERY CITIZEN IN ANY COUNTRY. ANY SOCIAL HOUSING PROJECT SHOULD CONSIDER THESE PARAMETERS WHEN APPROACHING A VISION. SOCIAL HOUSING GOES BEYOND ONLY PROVIDING HOMES TO PEOPLE, IT SHOULD AIM TO ESTABLISH AN ECO SYSTEM WHERE INHABITANTS SEE THEMSELVES GROW TO A MORE EQUAL WORLD. SOCIAL HOUSING AS A CONCEPT HAS TO BE INTERWOVEN WITH A WHOLESOME LIVING EXPERIENCE FOR THE COMMUNITY.

ANY COMMUNITY TO SUSTAIN AND THRIVE IT NEEDS DEDICATED SPACES FOR VARIOUS FUNCTIONS IT SHOULD AIM TO CATER TO WHILE SERVING AS A HOME THAT BUILDS AND PROSPERS INDIVIDUALS IN A SOCIAL, HEALTHY AND ENVIRONMENTALLY SUSTAINABLE FABRIC.

SELF-
SUSTAINING
SOCIAL
HOUSING

DWELLING
FOOD
UPSKILL
OPPORTUNITIES
FACILITIES
ENTERTAINMENT
SOCIAL
COMMUNITY
FAITH

HOUSING
FARM PRODUCE
INSTITUTIONS
OFFICES
GROCERY/RETAIL
MALL/MULTIPLEX
ART & CULTURE
COMMUNITY HALLS
PRAYER HALL

HOME TOWN

'HOME TOWN' IS A PLACE WHERE YOU ARRIVE AT WHEN YOU WANT THE CITY'S SOCIAL FABRIC TO PROVIDE AN ECOSYSTEM THAT SUSTAINS AND NURTURES GROWTH FOR SOCIAL HOUSING AS A STARTUP AND ORGANICALLY GROWS TO SUPPORT THE CITY BACK.

HOME TOWN