



01 - MACKIE'S - for the people; by the people - MASTER PLAN

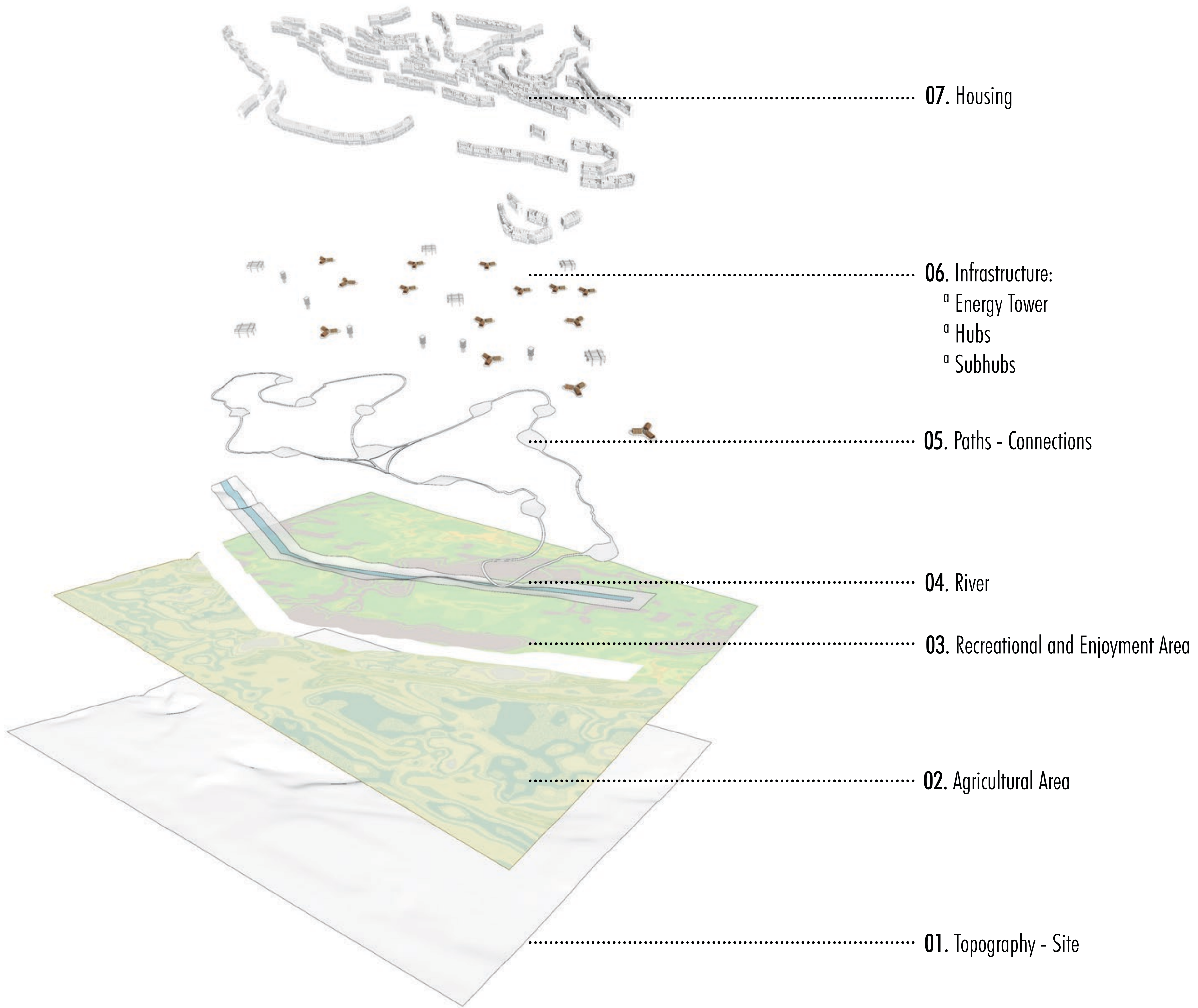
City of the Future _

We define **MACKIE'S** as a place for sustainable living, with a blue economy system and has the capacity for creating community.

Is conceptualized from the 6 principle pillars, looks to give people a home to live within, where there daily basis: Live, Work, Recreate, are given.

The project is divided in 196 modules where has the capacity to contain until 6 dwellings in each one. In general a total of 1,176 homes - of 581.2 sqft can be develop, where its main property to growth in accordance to its user.

Finally the dwellings are supported with 07 Hubs for social programs,as well as, 14 subhubs where commercial daily needs are placed. And 07 power towers through the river where energy is develop for the MasterPlan.



07. Housing

06. Infrastructure:
a Energy Tower
a Hubs
a Subhubs

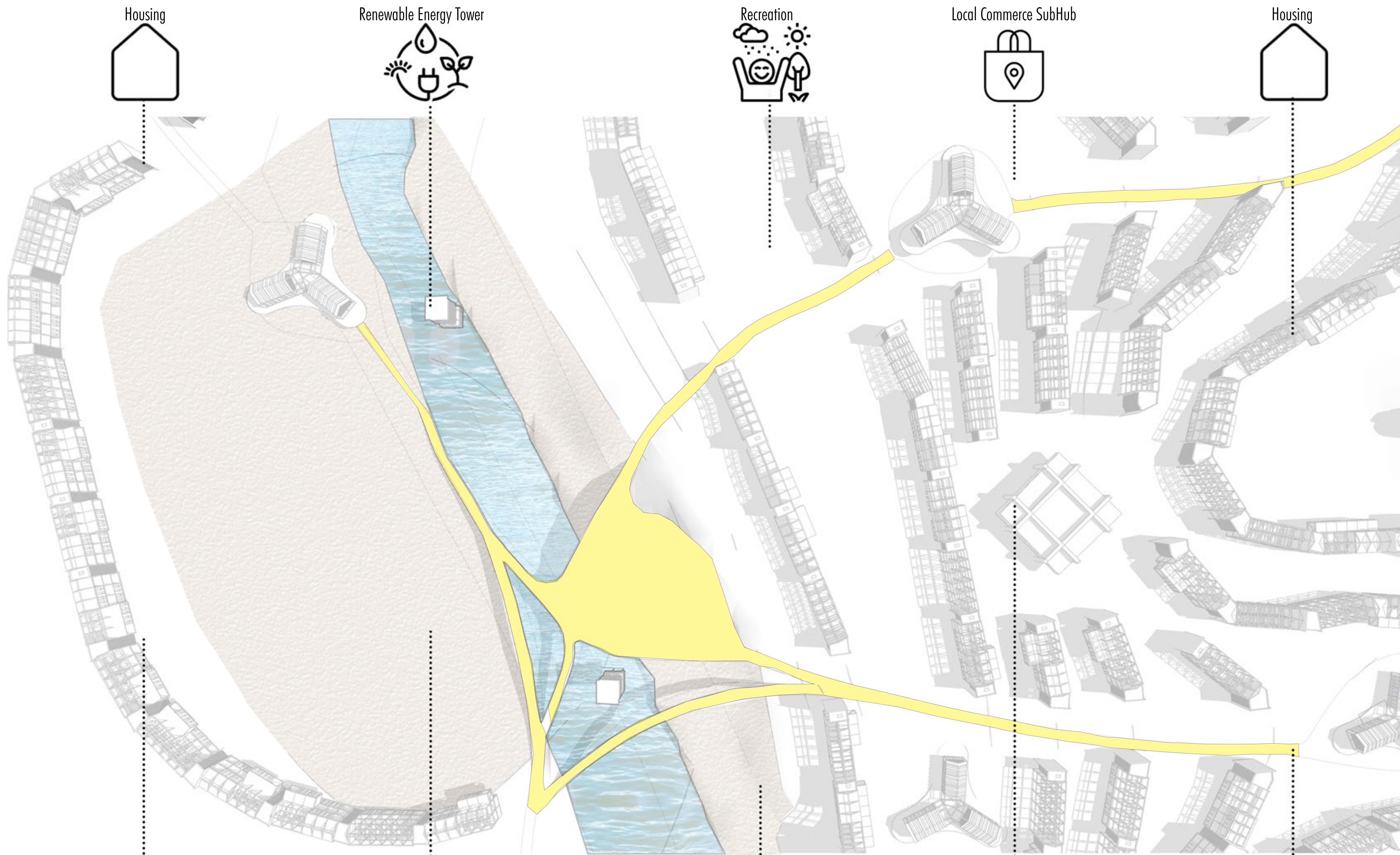
05. Paths - Connections

04. River

03. Recreational and Enjoyment Area

02. Agricultural Area

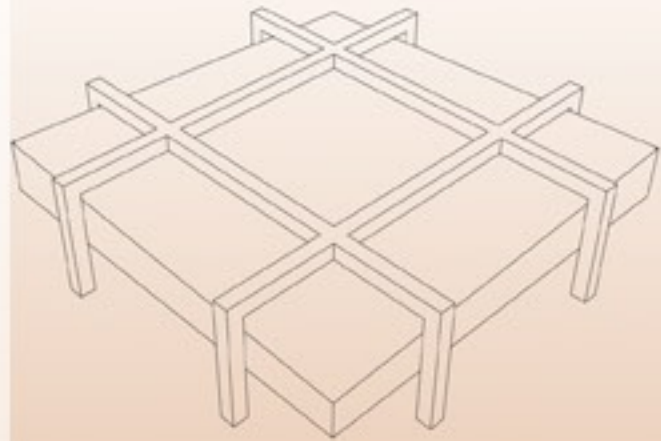
01. Topography - Site







HUB



x **7**

PROGRAM/ACTIVITIES

WELL-BEING HUB

LEARNING HUB

MARKET/TRADING HUB

CULTURAL HUB

WORKSHOPS HUB

RECREATIONAL HUB



SUB-HUB



x **14**

PROGRAM/ACTIVITIES

LOCAL SHOPPING

LOCAL HEALTH FACILITIES

NURSERY PUBLIC ROOMS

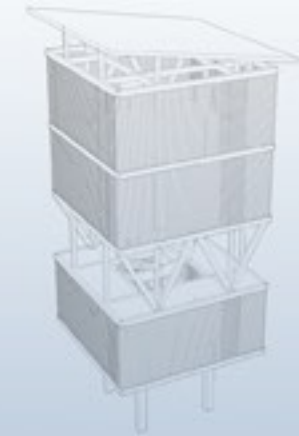
COMMUNITY DINING ROOMS

LOCAL EMPLOYMENT

LOCAL EMPLOYMENT



TOWER



x **7**

PROGRAM/ACTIVITIES

SOLAR ENERGY

HIDRAULIC ENERGY

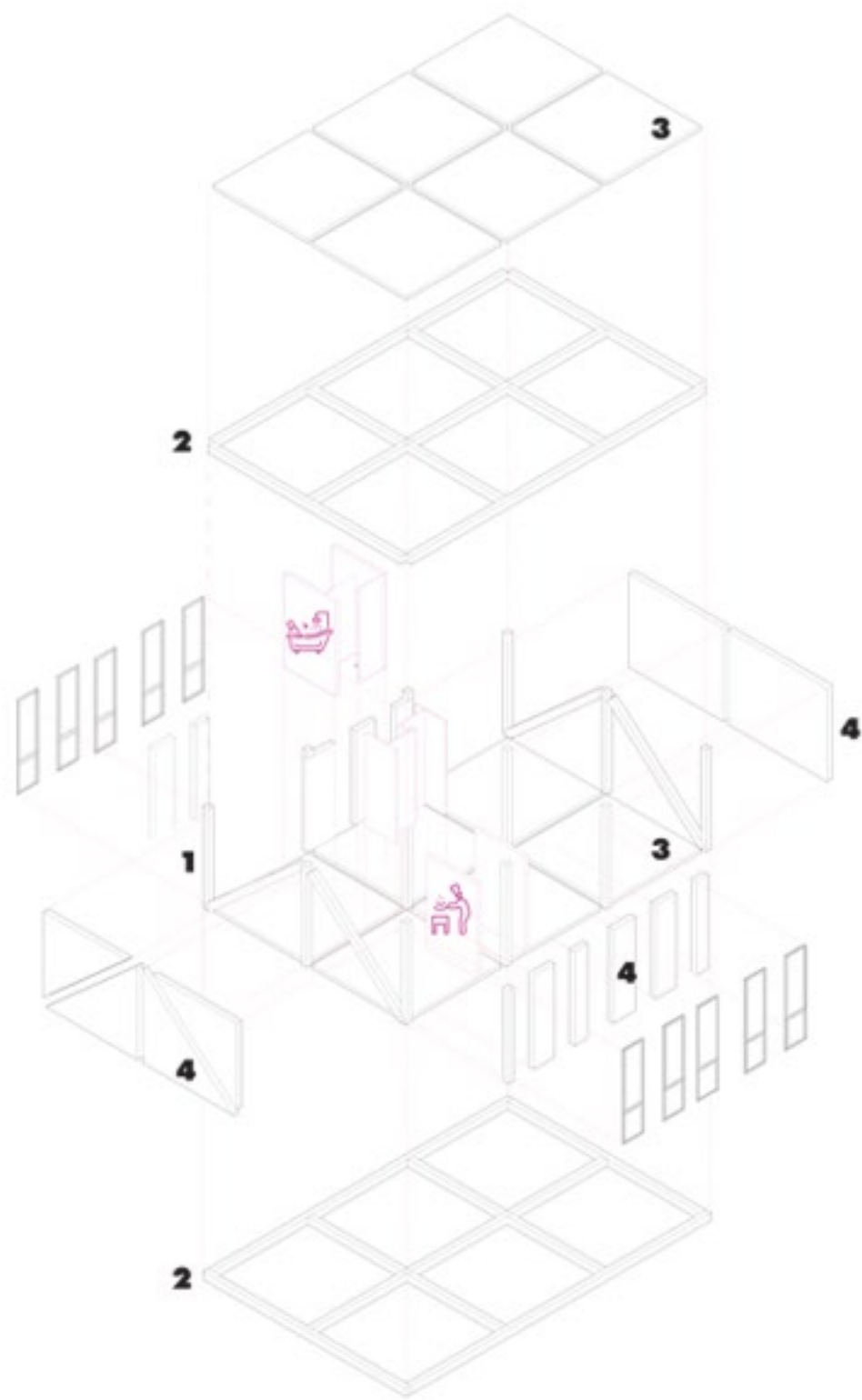
COMPOSTING



Customization according to user needs.

Customization and flexibility of spaces are the main concepts behind the proposed dwelling. It will enable its inhabitants to appropriate, transform and adapt the space according to the needs of a particular individual, family or coliving group of people.

The house area starts in 387.5 sqft and can be expanded in time to 581.2 sqft.



0 Base module. This module contains the basic needs that every individual needs: a place to cook, a place for hygiene. This is the core of the house and enables the flexibility and growth of any user.

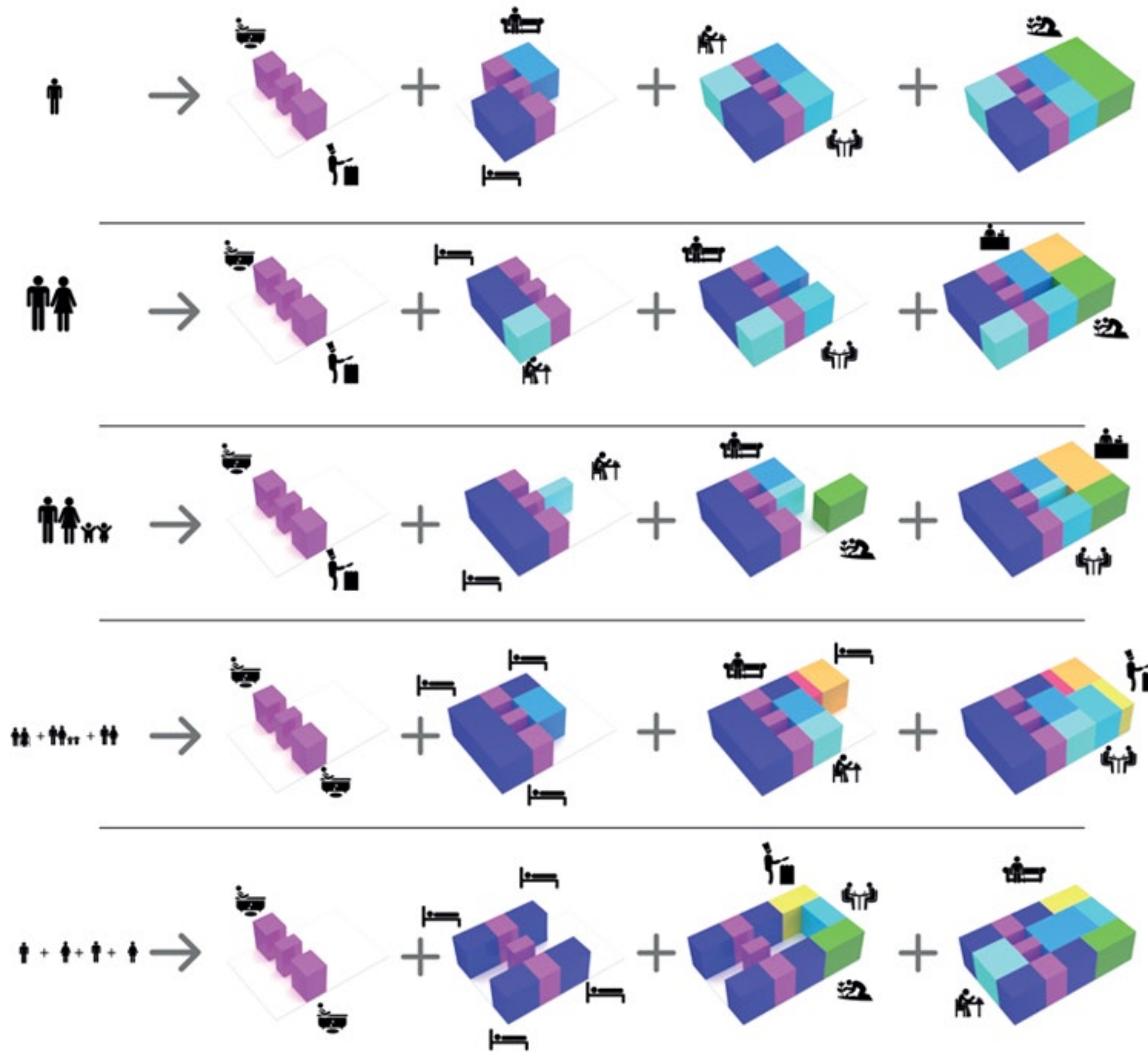
1 Structural Columns are structured in prefabricated sustainable wood.

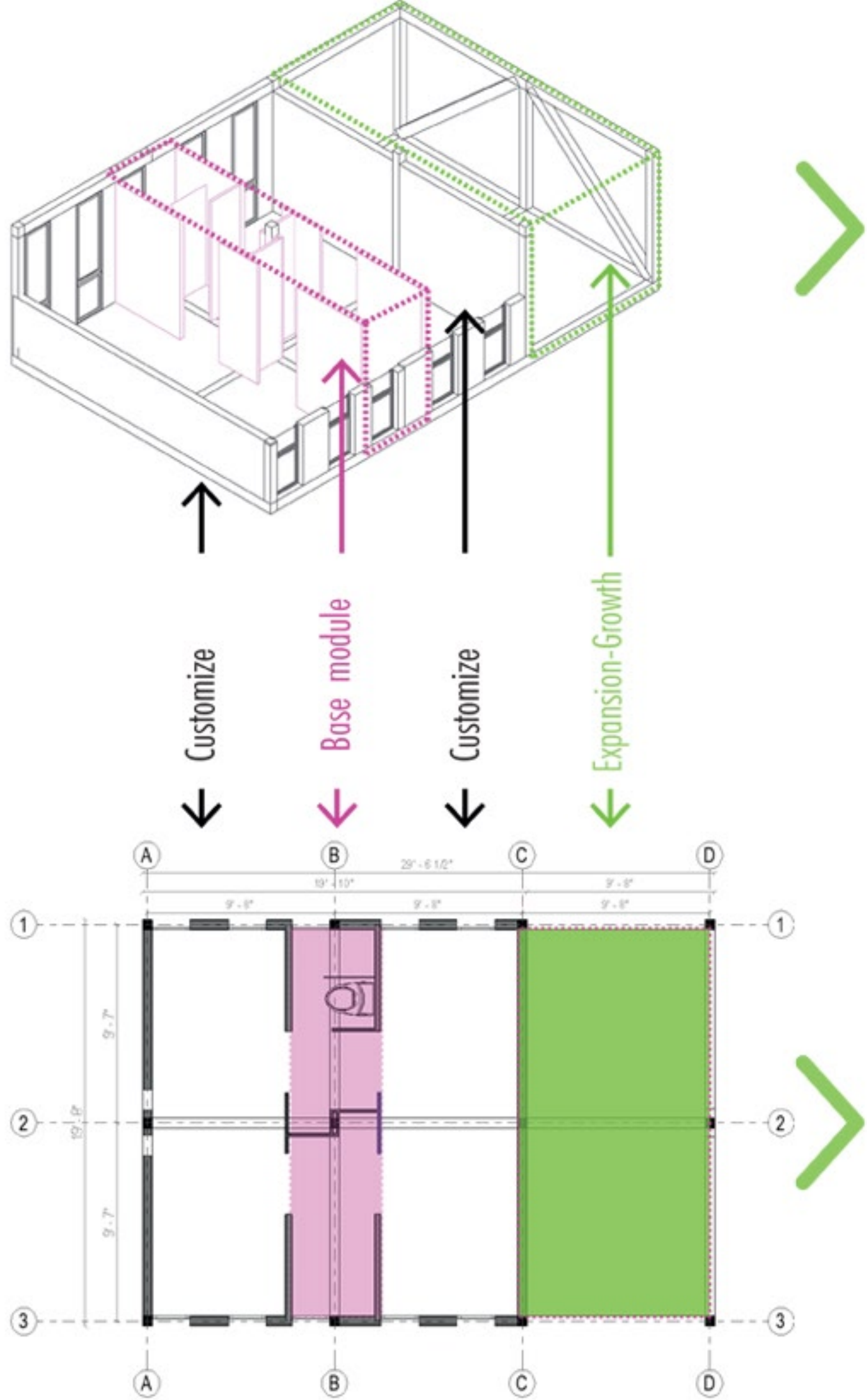
2 Structural Beams are structured in prefabricated sustainable wood.

3 Floor Slabs. Composite of wood and insulating materials.

4 Facade Walls. Pre-fab elements. Composite of wood and insulating materials.

5 Windows. High-efficiency glass and sustainable wood frames.





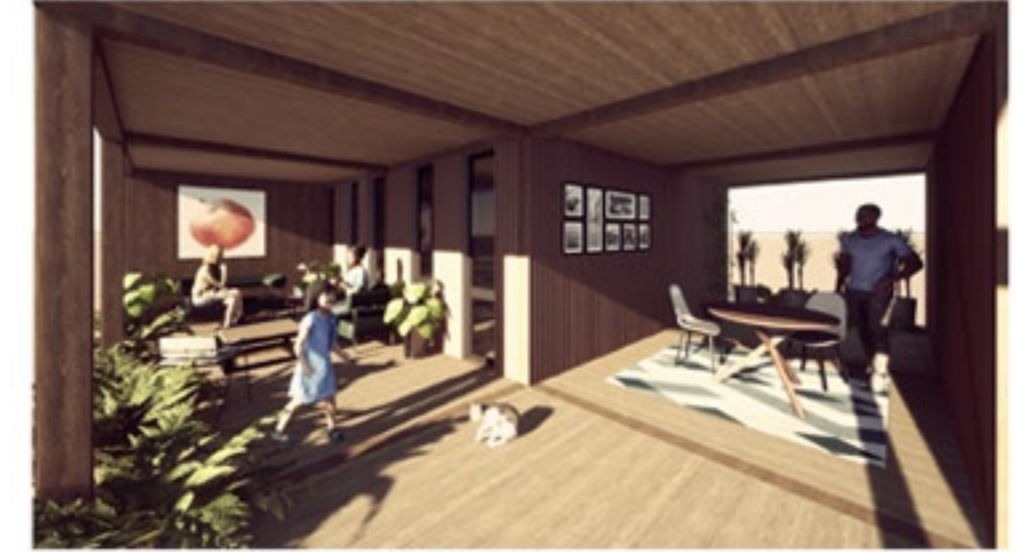
- Bedroom
- Workshop
- Room
- Commerce
- Orchard
- Shop



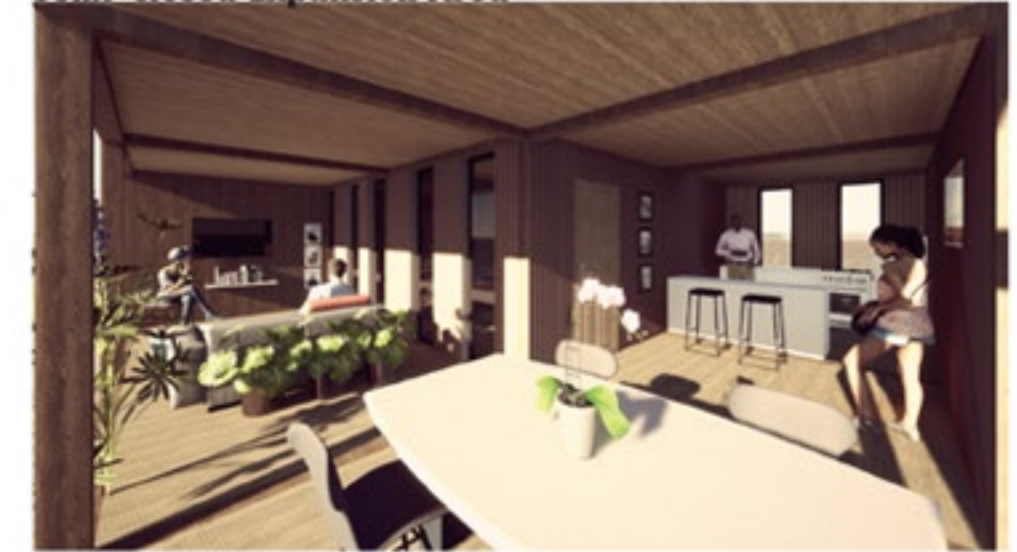
Expansion/Growth

The Expansion-Growth area enables the inhabitants to expand their home according to their changing needs and necessities.

Open Expansion Area



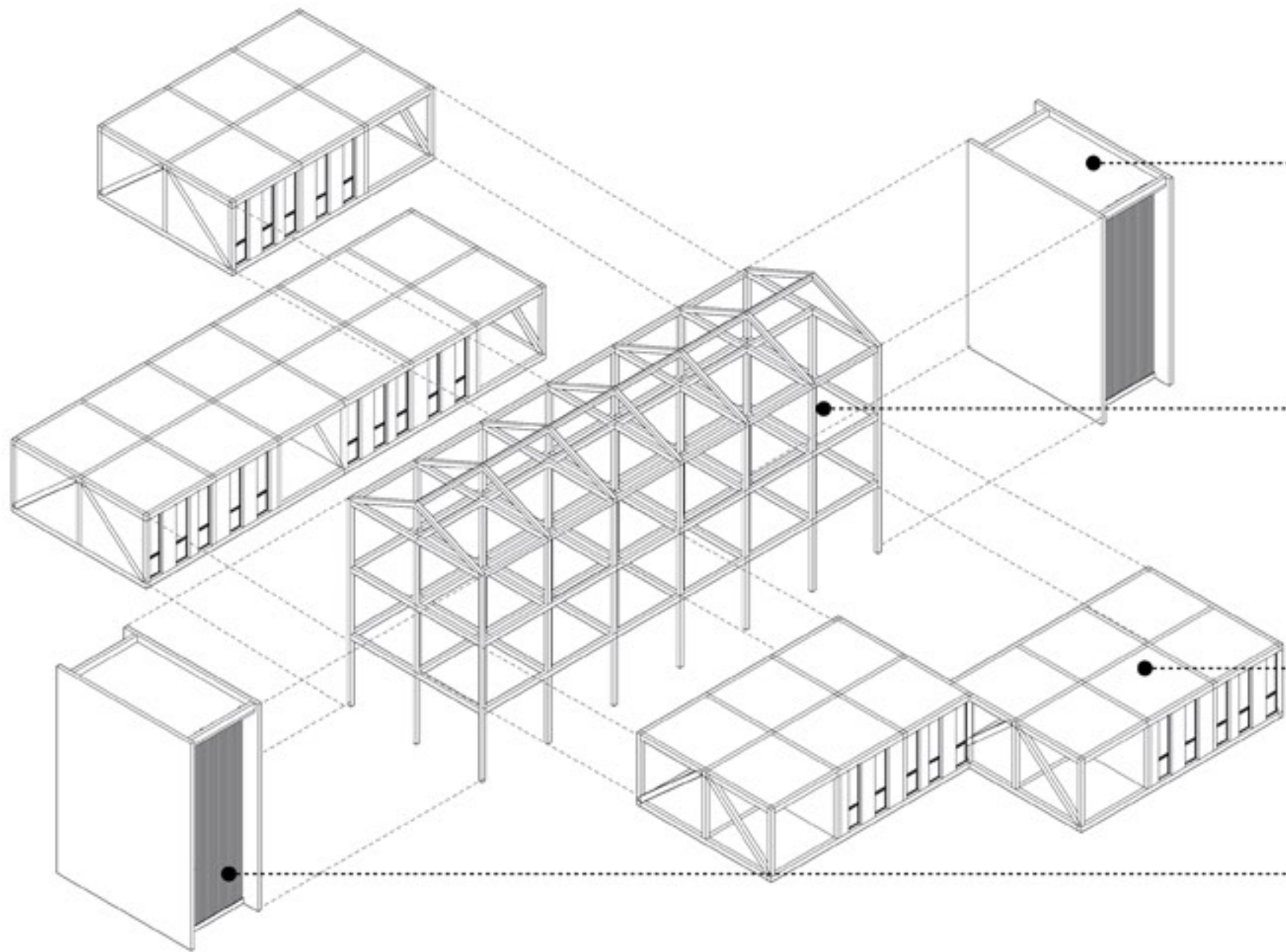
Semi-Closed Expansion Area



Closed Expansion Area



Housing Module Typology



Vertical circulation Module/Conector

This module contain the stairs for the vertical circulation to access higher housing units. It also serve as a conector to other buildings.

Main Structure Grid

The structure its all an assembly of pre-fab sustainable wood elements.

Dwelling Unit

The Living units have the capability to plug to the The Main Structure.

Vertical circulation Module/Conector

This module contain the stairs for the vertical circulation to acces higher housing units. It also serve as a conector to other buildings.



YEAR 0

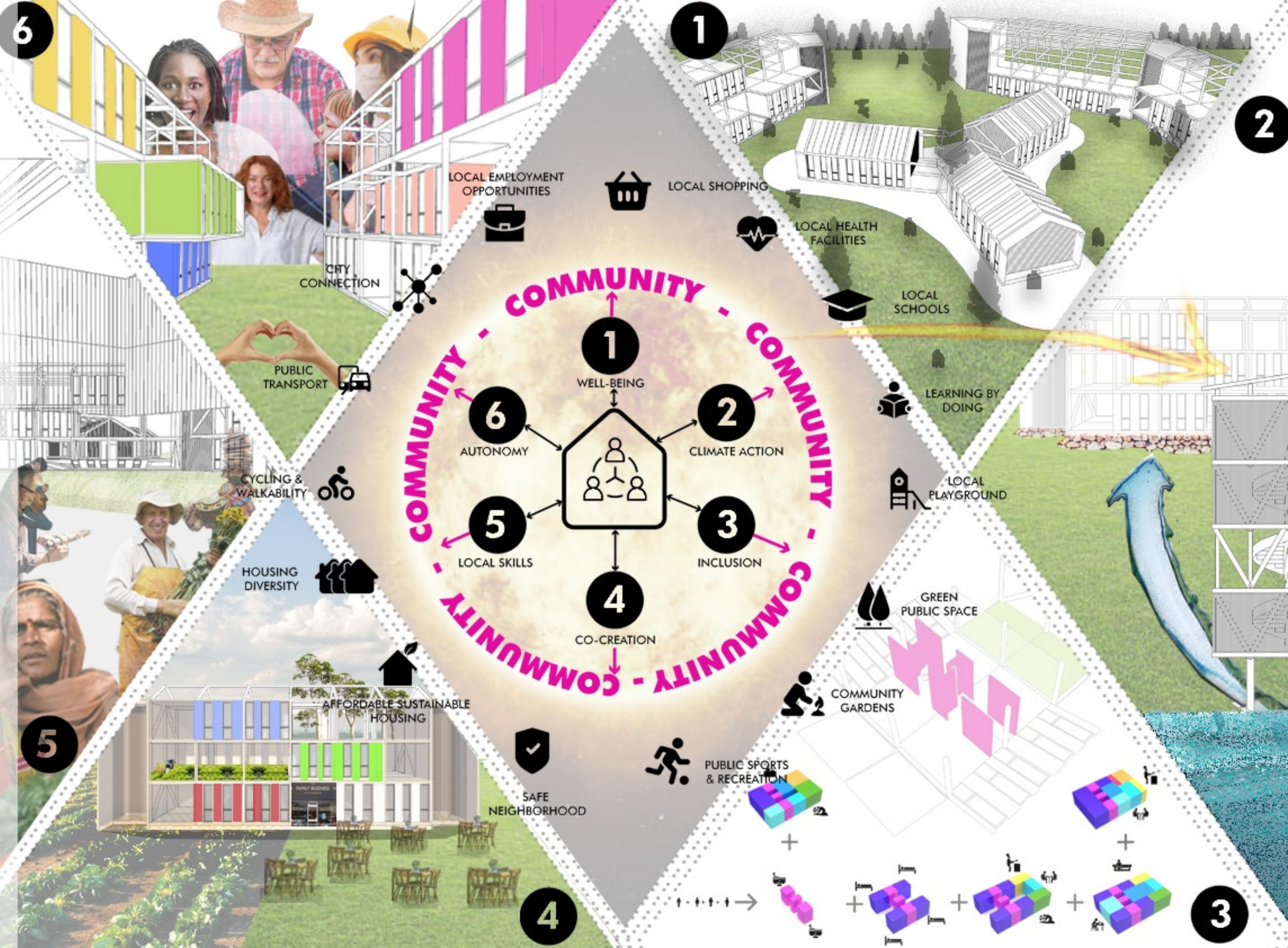


YEAR 1



YEAR 3





MACKIES // A DAY IN THE LIFE of... Grace & Little Jack

1 Wake-UP



3 Cook for Little Jack



2 Grab vegetables from the indoor veggie patch



4 She rides Little Jack to the Community Garden for the day



5 Jogs through the green areas with his friend Mary



6 Everyday she assist to the art workshops that occurs in the a Sub-Hub.



7 Meets some friends at the Community Dinner Hall for lunch



8 In the afternoon she comes back to the Art Workshop to teach children.



9 After picking up Little Jack in the garden, they ride to the market for some groceries.



10 At the end of the day, Grace is very grateful for her life, her son and her community. iGrateful for the New Mackies!!!



Grace is a freelance professional artist. She lives with her son little Jack, 4 years old.

She loves to cook at home, share with the community and enjoy nature.

She've been living in the new Mackies for 2 years.



GRACE & LITTLE JACK

Mackies.

For the people, by the people.

Mackies, *For the people, By the people*, is a project that relies on one basic concept: a community-led model of living. The aim of this model is to develop a community capable of tackling all the challenges that currently affects the people in terms of housing, social inclusion, employment, climate change and other relevant issues.

The community is based on 6 main principles:

WELLBEING
CLIMATE ACTION
INCLUSION
CO/CREATION
LOCAL SKILLS

AUTONOMY

With this principles, we encourage the community to consolidate an autonomous, inclusive and sustainable community. And to develop a neighborhood that facilitates the development of individuals and families by giving them access to a large set of spaces and structures that enables them to enhance their well-being.

The proposed urbanism adapts to the Mackies site and highlights the most important elements of it: the existing surroundings and connection streets, its relationship with the city parks, and most importantly, the project integrates into its development the river as a key element for the development of the new Mackies.

We want that the people could use the river as a source of growth and development: where they can develop communal crops and produce food, cattle, and produce supplies for the people. The river will also serve as energy production system with the Energy Towers at work, it will produce sustainable energy to be used by the people for their specific activities.

The architecture of the buildings is a collection of 3-story high tower that grows organically along the site and time. Its small scale allows for a human relationship with citizens and gives priority to the growth of vegetation and green spaces.

The buildings have the possibility of having a maximum of 6 housing units, which are connected over time to the supporting structure of the building. With a starting area of 387.5 ft² and a maximum development growth of 581.2ft², the housing units will give the freedom and flexibility to adapt and transform the space according to each family and individual necessity.

The project objective is to develop a total of 1,176 housing units for the people of Belfast. The objective is to give an opportunity for personal a family growth, spaces where they can find happiness , security, local employment, inclusion ,autonomy and wellbeing.

Welcome to Mackies. For the people, by the people.

