



Take Back the City: Mackies

Prepared for: PPR

Prepared by: Gordon Duffy, Principal

30 September 2022

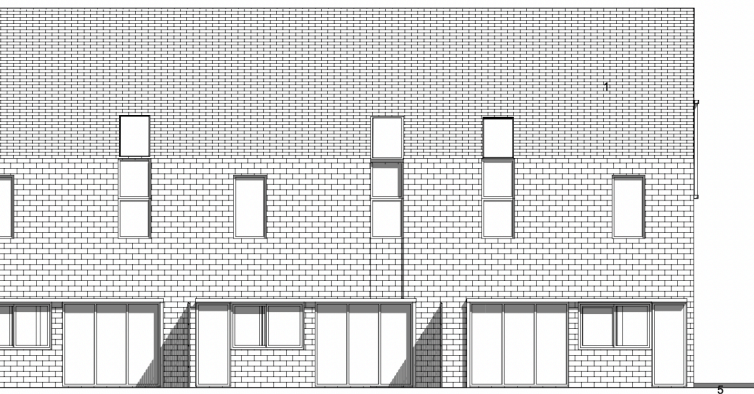
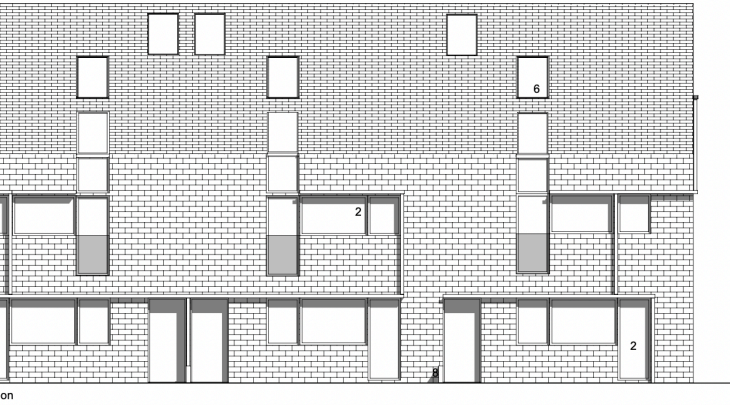
BRIEF QUESTIONS

A healthy place to live; Climate change; Inclusion

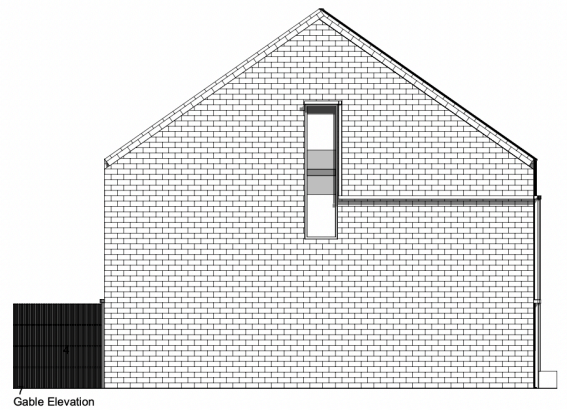
Highly insulated timber frame homes using other natural materials built -as far as possible- by and for the Community.

Co creation; employment skills; management and autonomy

- Engage with the community and the LA to create the masterplan
 - Work with Ligna Alba to establish a passive/solar timber kiln 'farm' to provide timber for dwellings, harvested from as close as possible in NI. Create a Garden Festival similar to that established in Chaumont France to create jobs and Community wealth
 - Establish a CIC to manage the development
-



- LEGEND
1. Slate
 2. Painted timber - Windows and doors
 3. Alutec boxer- rainwater goods
 4. Staggered board pattern treated timber fence
 5. Concrete pavers-shared surface
 6. Low profile velux rooflight
 7. Garden Area-Turf
 8. Dwarf wall



Take Back the City: Mackies

Prepared for: PPR

Prepared by: Gordon Duffy, Principal

30 September 2022

DWELLINGS

Objective

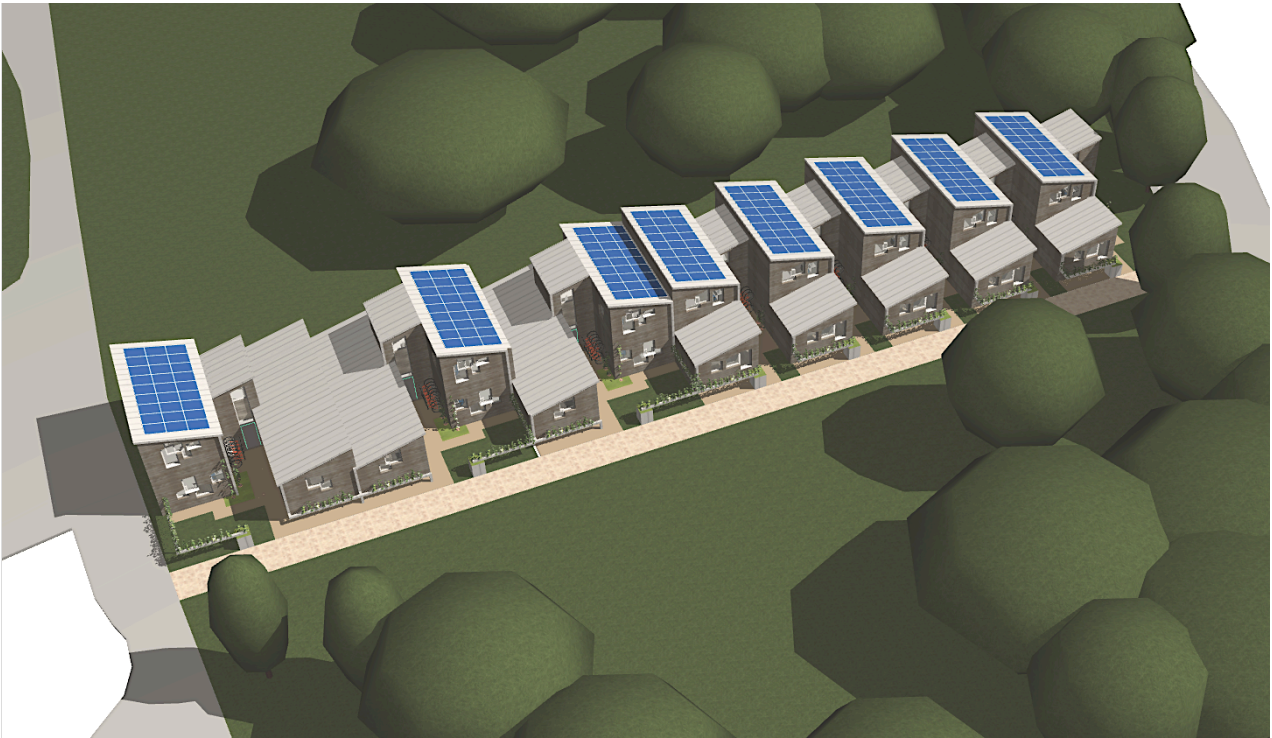
A mixture of house plan types focussed on affordable units: Terraced housing, semi detached dwellings, flats..typical family terraced flat illustrated

Goals

Energy efficient attractive homes for all

Solution

Engage with the Community and the Council to establish an acceptable mix and design of units.



Take Back the City: Mackies

Prepared for: PPR

Prepared by: Gordon Duffy, Principal

30 September 2022

STREET SCENE

Objective

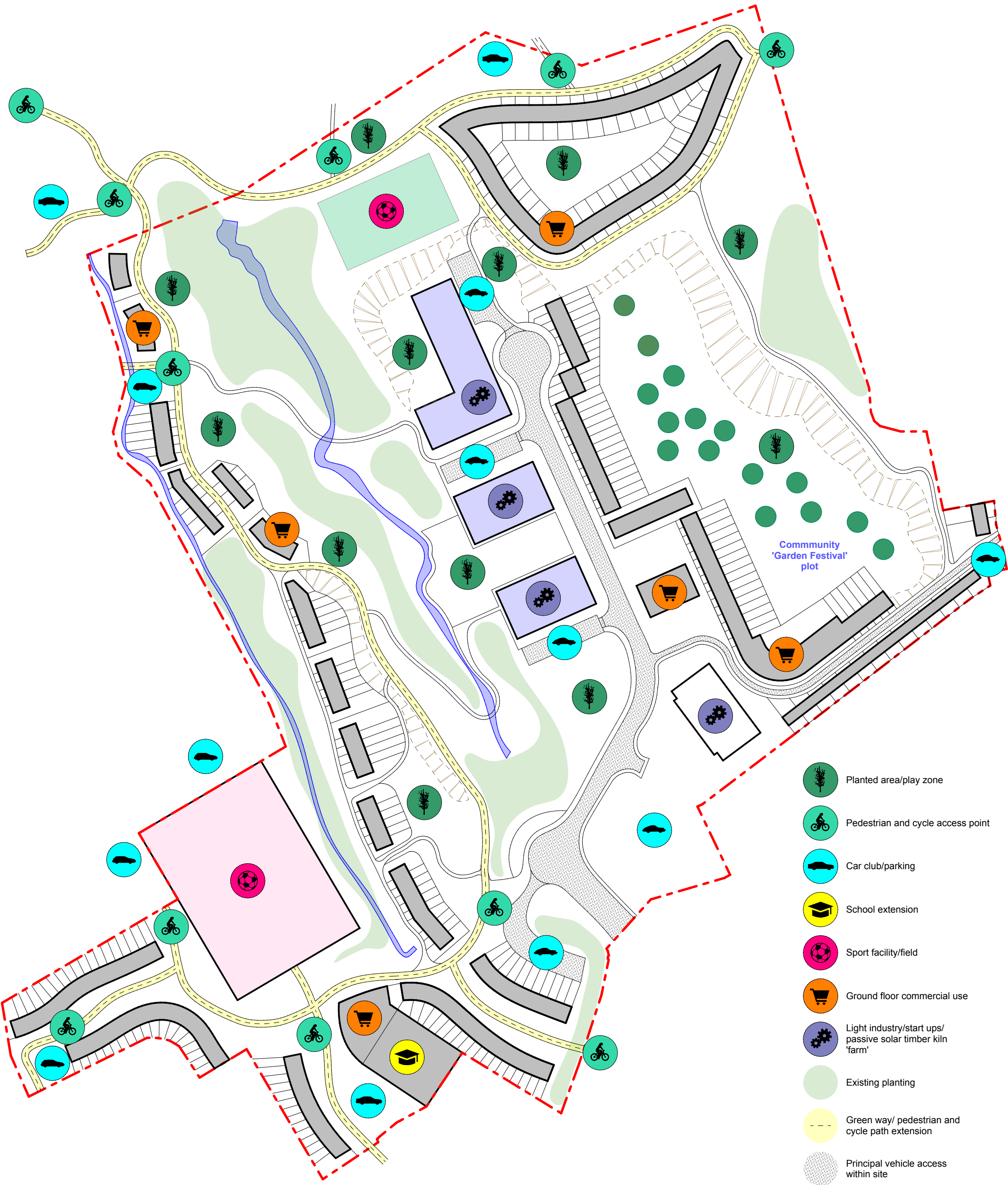
A safe attractive environment in which to live.

Goals

Car free (by and large), safe attractive streets for all in the Community.

Solution

New housing embraces a greenway which wraps around the site and the existing topography, providing an attractive setting to live and work. A mixture of houses types and tenure across the site focussed on affordable housing.



-  Planted area/play zone
-  Pedestrian and cycle access point
-  Car club/parking
-  School extension
-  Sport facility/field
-  Ground floor commercial use
-  Light industry/start ups/
passive solar timber kiln
'farm'
-  Existing planting
-  Green way/ pedestrian and
cycle path extension
-  Principal vehicle access
within site



Studio DUB
17a/2 West Crosscauseway
Edinburgh
EH8 9JW
0131 668 1536
studiodub@mac.com

Take Back the City

Participation and Practice of Rights (PPR)

Site Plan

Scale:
1:2000 (A3)

Drawing Status:
Competition entry

Date: 30/09/2022

3 cm ACTUAL

IF THE ABOVE DIMENSION DOES NOT MEASURE THREE CENTIMETERS (3 cm) EXACTLY, THIS DRAWING WILL HAVE BEEN ENLARGED OR REDUCED, AFFECTING ALL LABELED SCALES.

Unauthorised use / copying of this drawing in whole or in part prohibited, issue is not a licence for such.
Any discrepancies between / on drawings to be reported to the Architect directly. All dimensions to be confirmed on site prior to any orders being placed.

Garden Festival of similar nature to that proposed
<https://youtu.be/5fMg5EL6iMU>

Ligna Alba solar kiln
https://youtu.be/OuiKUzL_hml